

WILTON PUBLIC SCHOOL

LANDSCAPE DEVELOPMENT APPLICATION

DRAWING REGISTER

DWG NO.	DRAWING NAME	SCALE	SIZE	ISSUE
L000	COVER SHEET & PLANTING SCHEDULE	NTS	A1	D
L001	SPECIFICATION NOTES	NTS	A1	C
L200	LANDSCAPE SITE PLAN	1:500	A1	D
L201	LANDSCAPE DETAIL PLAN	1:200	A1	D
L202	LANDSCAPE DETAIL PLAN	1:200	A1	D
L901	TYPICAL DETAILS	AS SHOWN	A1	C

LANDSCAPE PLANT SCHEDULE

PLANT CODE	BOTANICAL NAME	COMMON NAME	MATURITY HEIGHT AND SPREAD (m)	SUPPLY HEIGHT AND SPREAD (m)	CONTAINER SIZE	DENSITY/m ²	QTY
TREES							
EUC cre	<i>Eucalyptus crebra</i>	Ironbark	30m x 20m	400mm	25L	as shown	20
EUC ter	<i>Eucalyptus tereticomis</i>	Forest Red Gum	35m x 12m	400mm	25L	as shown	15
MEL sty	<i>Melaleuca styphelioides</i>	Paperbark	10m x 8m	400mm	25L	as shown	17
EUC mol	<i>Eucalyptus moluccana</i>	Grey Box	25m x 10m	400mm	25L	as shown	9
ACA dec	<i>Acacia decurrens</i>	Black Wattle	10m 4m	400mm	25L	as shown	13
MAG gra	<i>Magnolia grandiflora</i>	Little Gem	6m x 3m	4.5m x 2.5m	400L	as shown	1
SUBTOTAL							75
SHRUBS AND GRASSES							
ANI vel	<i>Anigozanthos hybrid 'Amber Velvet'</i>	Anigozanthos Amber Velvet	0.8m x 0.4m	na	150mm	4	149
DIA jes	<i>Dianella caerulea 'Little Jess'</i>	Dianella Little Jess	0.5m x 0.5m	na	150mm	4	98
HAR vio	<i>Hardenbergia violacea</i>	False sarsaparilla	0.5m x 2m	na	150mm	4	90
LOM lon	<i>Lomandra longifolia</i>	Basket Grass	1.2m x 1m	na	150mm	4	182
PEN naf	<i>Pennisetum alopecuroides 'Nafray'</i>	Pennisetum Nafray	0.6m x 0.6m	na	150mm	4	165
SUBTOTAL							684
GROUND COVERS							
MYO par	<i>Myoporum parvifolium</i>	Creeping boobialla	0.15m x 1m	na	150mm	5	344
VIO hed	<i>Viola hederacea</i>	Native Violet	0.15m x 2m	na	150mm	5	175
SUBTOTAL							519
GRAND TOTAL							1279

SITE PLAN



LANDSCAPE STATEMENT:

THE FOLLOWING PLANS, REQUESTED BY Wollondilly COUNCIL IN ACCORDANCE WITH THE FOLLOWING CONSENT CONDITIONS -
NOTICE OF DETERMINATION NO. 010.2018.00000525.001 dated 20 November 2018

- (1) A detailed landscape plan, drawn to scale by a person with horticultural qualifications or similar. This plan must include the following:
- (a) All existing and proposed site structures.
- (b) All existing vegetation to be retained.
- (c) Details of proposed earthworks including mounding, retaining walls and planter boxes.
- (d) Location, number and type of proposed replacement plant species
- (e) Details of planting procedure and maintenance.
- (f) Details of drainage and watering systems
- (g) Provision of only native species that are endemic to the region.
- (h) Details of compliance with the landscaping requirements of other conditions of this consent.
- (i) Replacement tree size should be 2511 / 300mm pots with an adequate maintenance program to ensure their establishment.

PLEASE REFER TO THE FOLLOWING DRAWINGS AND REPORTS FOR REFERENCE

- ALLIED TREE CONSULTANCY July 2019 Wilton Public School, WILTON,NSW
- Biodiversity Development Assessment Report | Department of Education- PREPARED BY ECO LOGICAL AUSTRALIA PTY LTD - DATED **25 November 2020**
- architectural DA drawings by lahnimmo architects dated 05/02/2020

THE LANDSCAPE DESIGN WILL CREATE AN INTEGRATED, VERDANT AND DIVERSE SEQUENCE OF EXTERNAL SPACES THAT COMPLEMENT THE ARCHITECTURE AND CONTRIBUTE TO LOCAL PRECINCT. CAREFUL CONSIDERATION OF THE ARCHITECTURAL BUILDING AND CONCEPTUAL COLLABORATION HAS CONTRIBUTED TO THE LANDSCAPE DESIGN SOLUTIONS.

THE LANDSCAPE PLAN WILL ADDRESS THE FOLLOWING DESIGN OBJECTIVES:

- ENHANCE THE APPEARANCE AND AMENITY OF THE PROPOSED DEVELOPMENT BY SENSITIVELY INTEGRATING ARCHITECTURE AND LANDSCAPE THROUGH EFFECTIVE SITE PLANNING AND LANDSCAPE DESIGN,
- ESTABLISH A VISUALLY AND ENVIRONMENTALLY SENSITIVE LANDSCAPE, COMPLIMENTARY TO THE ARCHITECTURAL VISION AND GREATER URBAN SETTING, WHILE PROVIDING HIGH QUALITY SPACES FOR VISITORS,
- ASSIMILATE THE DEVELOPMENT INTO THE SURROUNDING URBAN CONTEXT THROUGH THE DEVELOPMENT OF AN INTEGRATED AND PERMEABLE LANDSCAPE AND OPEN SPACE ENVIRONMENT,
- INCORPORATE WATER SENSITIVE URBAN DESIGN PRINCIPLES AND ENVIRONMENTALLY SENSITIVE DESIGN TO CREATE A LOW MAINTENANCE, ENVIRONMENTALLY.

SENSITIVE LANDSCAPE THAT HAS A DISTINCTIVE TREE CANOPY WITH DIVERSE LOW SHRUB GROUNDCOVERS.

THE LANDSCAPE PLANTING FOR THE SITE WILL ACKNOWLEDGE ITS EXTENSIVE NATIVE CANOPY AND COMPLIMENT THE EXISTING WOLLONDILLY CHARACTER PLANTING LIST.

TREE REPLACEMENT STRATEGY:

WE HAVE ALLOCATED A 1:1 REPLACEMENT APPROACH WITH THE REMOVAL OF 62 TREES ON SITE TO BE REPLACED WITH THE PROPOSED TREE SPECIES (62) IN ACCORDANCE WITH THE BIODIVERSITY DEVELOPMENT ASSESSMENT REPORT AND ARBORIST REPORT.

PLANTING SPECIFICS:

THE PLANT PALETTE USED FOR THE SITE SHOULD REINFORCE ALL THE THEMES AS PREVIOUSLY DISCUSSED. THE ENVIRONMENTAL THEME REQUIRES THAT THE PLANTING PALETTE DRAW FROM THE EXISTING LOCAL VEGETATION COMMUNITIES.

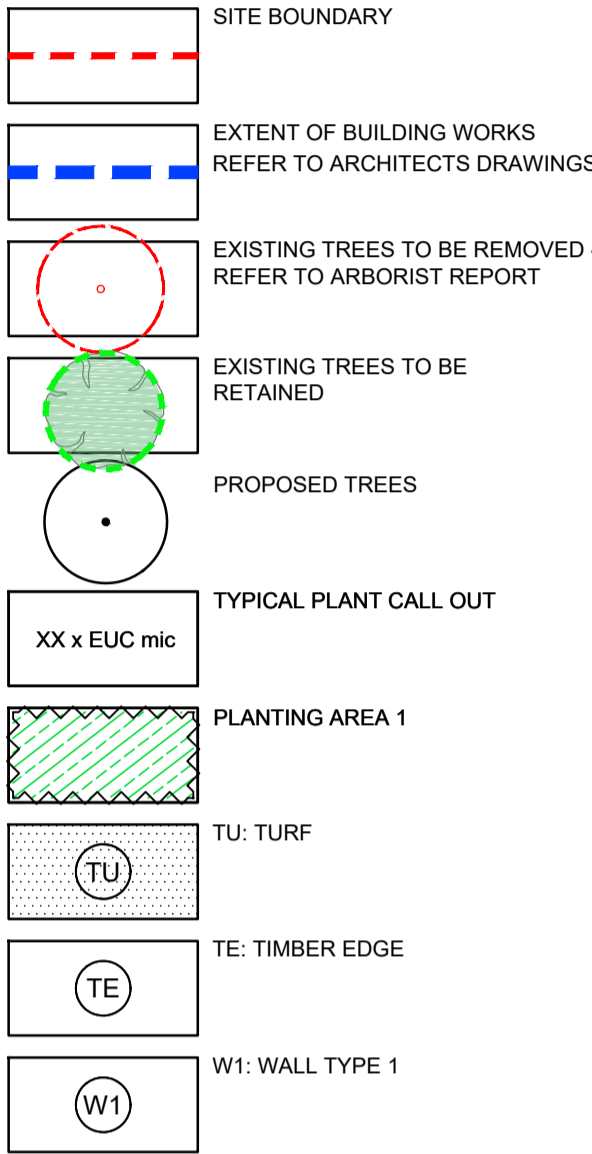
OBJECTIVES:

- TO INCREASE THE NUMBER OF INDIGENOUS SPECIES PLANTED IN WOLLONDILLY REGION
- TO ELIMINATE THE USE OF NOXIOUS WEEDS OF POTENTIALLY INVASIVE SPECIES IN DEVELOPMENTS
- TO USE PLANTS IN SUCH A WAY TO FOSTER ENERGY EFFICIENT DEVELOPMENT THAT RELIES ON PASSIVE ENERGY PRINCIPLES FOR HEATING AND COOLING
- TO REDUCE MAINTENANCE AND WATER CONSUMPTION THROUGH APPROPRIATE SPECIES SELECTION
- TO CREATE BUFFER ZONES AND ADD TO EXISTING AREAS OF REMNANT VEGETATION WITH LOCALLY INDIGENOUS SPECIES.
- THE LANDSCAPE PLANTING FOR THE SITE WILL HAVE A MINIMUM OF 75% OF INDIGENOUS WATER SENSITIVE PLANTING SPECIES

DISCLAIMER

Copyright by Urbis Pty Ltd. This drawing or parts thereof may not be reproduced for any purpose or used for another project without the consent of Urbis other than reproduction for the purposes of actual ordering, supply, installation or construction. This drawing must be read in conjunction with all relevant contracts, schedules, specifications, drawings and any other issued written instructions. Do not scale from drawings. Written figured dimensions take preference to scaled dimension and must be verified on site before proceeding with any work. All discrepancies must be referred to the superintendent for a written decision prior to ordering, supply or installation. Urbis must be notified in writing of any discrepancies.

LEGEND



NOTE:
PLANTING MIXES TO BE SAMPLE LAID IN POTS AND SAMPLE AREA APPROVED - PRIOR TO INSTALLATION
INSTALL SIZES ARE BASED ON SUITABLE PROCUREMENT TIMES & ARE ESTIMATE
ONLY THE CONTRACTOR SHALL COMPLETE ALL PLANTING WORKS IN ACCORDANCE WITH THE RELEVANT STATUTORY REQUIREMENTS, STANDARDS, CODES AND GUIDELINES
INCLUDING BUT NOT LIMITED TO:
• NATSPEC GUIDE: SPECIFYING TREES -
A GUIDE TO ASSESSMENT OF TREE QUALITY
• AS 1289 - METHODS OF TESTING SOILS FOR ENGINEERING PURPOSES
• AS 4419 - 2003 SOILS FOR LANDSCAPING AND GARDEN USE
• AS2303 - TREE STOCK FOR LANDSCAPING USE
• WORKCOVER AUTHORITY OF NSW CODE OF PRACTICE - MOVING PLANT ON CONSTRUCTION SITES
• WORKCOVER CODE OF PRACTICE FOR THE AMENITY TREE INDUSTRY -1998

NOTE: CHECK SURVEY DRAWINGS PRIOR TO COMMENCEMENT OF ANY SITE PLANNING WORKS.
CONTRACTORS SHOULD SOURCE THE LATEST CONSULTANT DWGS FROM THE CONSULTANT RESPONSIBLE FOR THOSE WORKS. THESE DRAWINGS HAVE BEEN PREPARED, IN PART, BASED UPON INFORMATION FURNISHED BY OTHERS. WHILE THIS INFORMATION IS BELIEVED TO BE RELIABLE, URBIS ASSUMES NO RESPONSIBILITY FOR THE ACCURACY OF THESE DRAWINGS OR FOR ANY ERRORS OR OMISSIONS THAT MAY HAVE BEEN INCORPORATED INTO THEM AS A RESULT OF INCORRECT INFORMATION PROVIDED TO URBIS. THOSE RELYING ON THESE DRAWINGS ARE ADVISED TO OBTAIN INDEPENDENT VERIFICATION OF ITS ACCURACY.

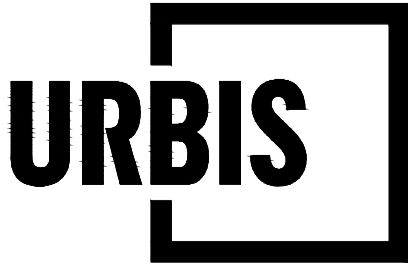
PLOT STYLE: URBIS_A1.ctb

PAGE SETUP:

PLOTTED BY: GEORGIA ASHDOWN

PLOT DATE: 08.03.2021

PATH: J:\National Design\04 PROJECTS\P0010000P00019965 Wilton Public School\09_Design\Urbis\02_CADD\layouts\L000_CS.dwg



PROJECT

WILTON PUBLIC SCHOOL DEVELOPMENT APPLICATION

Angel Place, Level 8, 123 Pitt Street | Sydney NSW 2000 Australia | +61 2 8233 9900 | URBIS Pty Ltd | ABN 50 105 256 228

KEY PLAN

ALL DRAWINGS ARE DESIGNED TO
BE PRINTED AND READ IN COLOUR

IT IS THE CONTRACTORS' RESPONSIBILITY TO
PRINT DRAWINGS IN COLOUR TO AVOID ANY
POTENTIAL DISCREPANCIES IF DRAWINGS
ARE PRINTED IN BLACK AND WHITE

CLIENT

SCHOOL INFRASTRUCTURE
NSW

DRAWING TITLE

COVER SHEET

ISSUE

DEVELOPMENT APPLICATION

SCALE

DRAWING NO.

L000

PROJECT NO.

P0019965

NORTH

REVISION

D

LANDSCAPE OUTLINE SPECIFICATION NOTES

GENERAL:

Note the following is an outline specification for DA purposes only.

All works are to be performed by suitably qualified and experienced trades persons in landscape works. All works shall be supervised by a qualified superintendent.

SERVICES IDENTIFICATION

The contractor shall verify the position of all services prior to the commencement of works and take all necessary precautions to protect services during implementation works.

SITE ESTABLISHMENT

The contractor shall establish site access and compound in position agreed with the Superintendent and or subject to Council approval. The Contractor shall be totally responsible for protecting the site works during construction and establishment including vegetation, pedestrian and vehicular management. Implement erosion control and site management practices to secure the site and to comply with all statutory requirements.

EARTHWORKS & DRAINAGE

EARTHWORKS: Bulk earthworks are by the civil contractor. The landscape contractor shall allow for minor earth trimming and profiling to prepare landscape areas to accept the nominated treatment. Protect exposed earthworks with temporary erosion measures and coordinate the on-site disposal of excess spoil with the Superintendent.

SUBSOIL AGRICULTURAL DRAINS:

All tree positions shall be free draining with positive drainage to SW outlets or natural drainage systems. Install 100mm diameter agg. drains including 200mm wide column of 10-20mm crushed drainage gravel and geo-textile fabric - Bidum A24. Seek direction from the site superintendent.

PIT LIDS:

The Contractor is to protect all pit lids during earthworks preperation. Retain Telstra concrete oval covers & pit checker plate steel pit covers, and concrete service pits. New pit lids are to be suitable for paver infill.

SOFT LANDSCAPE WORKS

SOIL MIX:

Imported Soil Mix:
All planter areas shall have a minimum soil depth of 300mm and 100mm to turf | grass areas with landscape quality soil that conforms to AS 4419 Soils for Landscaping and Gardens.

Ameliorated site topsoil mix:

The Contractor is to use stockpiled site topsoil adding soil additives and chemicals; lime gypsum and fertiliser nutrients to achieve AS4419.

SAMPLE & TESTING:

Provide 1kg soil mix test sample and data to of imported or modify site soil , clearly identified and referenced to the test data, prepared by an independent soil laboratory. Submit to the Superintendent for approval prior to supply and placement.

FERTILISER: Apply slow release Oganic fertiliser at the time of planting with pellets to advanced tree positions strictly in accordance with the manufacturers specification and with regard to season, soil mix, watering regimes and sub grade conditions.

PLANT MATERIALS:

Refer to the plant schedule. The contractor shall ensure that all plant materials are secured immediately upon award of contract. Failure to do so will not give rise to substitutions or extensions of time. All stock shall be grown in open areas which are exposed to the sun and wind to promote vigorous plant growth and to harden plants off. All plant material shall be pest and disease free. All plant material shall not be root bound or damaged. Plant densities shall reflect accepted industry standards and Councils guidelines for Landscape Works and be sourced from an accredited nursery. The Contractor will be responsible for purchasing and coordination of delivery to satisfy the construction program. It is the Contractor's responsibility to check trees at the supply source and to accept delivery of the trees at site, ensuring that the trees are supplied in accordance with the specification and are in good health. The Contractor shall allow for unloading and placement of all advanced tree materials.

All bag stock shall conform to the specification and must be secured from an Accredited Nursery. The current Natspec Guide "Purchasing Landscape Trees" is a **guide only** for quality tree production. All trees must be able to be planted without the use of tree stakes. Any trees requiring staking to be held vertical shall be rejected.

ADVANCED TREES:

Plant stock shall have a well developed straight stem with tri-branching structure and healthy canopy typical to the species and to the minimum sizes scheduled.

Excavate a hole a minimum 2X wider than the root ball and deep enough to accept a minimum 200mm of topsoil below. Break up the base of the hole to a further depth of 200mm, and loosen compacted sides of the hole as necessary to prevent confinement of root growth to the hole. Loosen sides of root ball to promote growth. Backfill with nominated soil mix, lightly tamp and water to eliminate air pockets. Ensure positive drainage to all tree positions.

Supply and install root barrier as nominated and staking as detailed on plans.

WATERING

If the watering regime is intended to be amended the contractor must seek written approval from the superintendent immediately prior to the deferment of watering. Watering permits: the contractor is responsible for obtaining the necessary watering permits required to carry out the watering as specified.

IRRIGATION SYSTEM

Supply and install an automatically controlled system to landscape areas identified on the plans to achieve 25mm/week precipitation rate. This system shall have a rain switch and have backflow prevention devices fitted in accordance with Councils regulations.

PLANTING MAINTENANCE

Protection of works: provide any fencing or barriers necessary to protect the planting from damage throughout the planting establishment period. Recurrent works: throughout the planting maintenance period, continue to carry out recurrent works of a maintenance nature all to the extent required to ensure that the plants are in the best possible condition at the end of the planting maintenance period. These activities are including but not limited to:

- Weeding,
- Fertilizing,
- Pest and disease control,
- Adjust / replace stakes and ties
- Topping up mulch,
- Cultivating,
- Pruning,
- Keeping the site neat and tidy

Replacements: the contractor is responsible for the replacement of failed, damaged or stolen trees, shrubs and groundcovers throughout the planting establishment period.

MAINTENANCE PERIOD:

General
Planting maintenance period: the planting maintenance period will be 52 weeks and will commence from the date of practical completion. Of each phase of planting works (hereby specified to be a separable part of the works). It is anticipated that planting works will be undertaken in one phase
Planting maintenance program: 2 weeks prior to practical completion, furnish a proposed planting establishment program, and amend it as required. Such proposal should contain details of the types and

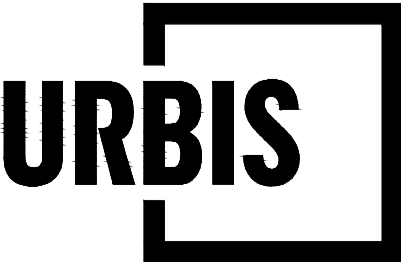
frequency of maintenance activities involved with the establishment of plants and grassed areas. Comply with the approved program. Planting maintenance log book: keep a log book recording when and what maintenance work has been done and what materials, including approved toxic materials, have been used. Log book must be signed off by the client's representative after each maintenance visit. Maintain log book in location nominated by superintendent. All entries are to be initialled by person nominated by superintendent. Log book to contain a copy of the approved planting establishment program. Product warranty: submit the supplier's written statement certifying that plants are true to the required species and type, and are free from diseases, pests and weeds. Insurance: the contractor is to ensure suitable insurance cover and / or bank guarantee is in place for the theft and / or damage of all works executed under this contract for the plant maintenance period.

**** ALL WORKS WITHIN THE PUBLIC DOMAIN IN ACCORDANCE WITH LOCAL COUNCIL RELEVANT DETAILS

All Levels Indicated Taken To Australian Height Datum (AHD)

Refer to Detail Drawings For Typical Details.

Generally All Materials & Construction to Comply To AS 3700



PROJECT
WILTON PUBLIC SCHOOL
DEVELOPMENT APPLICATION

Angel Place, Level 8, 123 Pitt Street | Sydney NSW 2000 Australia | +61 2 8233 9900 | URBIS Pty Ltd | ABN 50 105 256 228

KEY PLAN

ALL DRAWINGS ARE DESIGNED TO BE PRINTED AND READ IN COLOUR

IT IS THE CONTRACTORS' RESPONSIBILITY TO PRINT DRAWINGS IN COLOUR TO AVOID ANY POTENTIAL DISCREPANCIES IF DRAWINGS ARE PRINTED IN BLACK AND WHITE

REV	DESCRIPTION	DWN	CHK	DATE
C	DEVELOPMENT APPLICATION	GA	CR	08.03.2021
B	DEVELOPMENT APPLICATION	GA	CR	10.12.2020
A	DEVELOPMENT APPLICATION	GA	CR	01.12.2020

DISCLAIMER

Copyright by Urbis Pty Ltd. This drawing or parts thereof may not be reproduced for any purpose or used for another project without the consent of Urbis other than reproduction for the purposes of actual ordering, supply, installation or construction. This drawing must be read in conjunction with all relevant contracts, schedules, specifications, drawings and any other issued written instructions. Do not scale from drawings. Written figured dimensions take preference to scaled dimension and must be verified on site before proceeding with any work. All discrepancies must be referred to the superintendent for a written decision prior to ordering, supply or installation. Urbis must be notified in writing of any discrepancies.

PROJECT DIRECTOR: MK

CLIENT
SCHOOL INFRASTRUCTURE
NSW

DRAWING TITLE
SPEC NOTES

ISSUE
DEVELOPMENT APPLICATION
SCALE

DRAWING NO.
L001

PROJECT NO.
P0019965
NORTH

REVISION
C





PROJECT

WILTON PUBLIC SCHOOL
DEVELOPMENT APPLICATION

Angel Place, Level 8, 123 Pitt Street | Sydney NSW 2000 Australia | +61 2 8233 9900 | URBIS Pty Ltd | ABN 50 105 256 228

KEY PLAN

ALL DRAWINGS ARE DESIGNED TO
BE PRINTED AND READ IN COLOUR

IT IS THE CONTRACTORS' RESPONSIBILITY TO
PRINT DRAWINGS IN COLOUR TO AVOID ANY
POTENTIAL DISCREPANCIES IF DRAWINGS
ARE PRINTED IN BLACK AND WHITE

B	DEVELOPMENT APPLICATION	GA	CR	10.12.2020
A	DEVELOPMENT APPLICATION	GA	CR	01.12.2020
REV	DESCRIPTION	DWN	CHK	DATE

DISCLAIMER

Copyright by Urbis Pty Ltd. This drawing or parts thereof may not be reproduced for any purpose or used for another project without the consent of Urbis other than reproduction for the purposes of actual ordering, supply, installation or construction. This drawing must be read in conjunction with all relevant contracts, schedules, specifications, drawings and any other issued written instructions. Do not scale from drawings. Written figured dimensions take preference to scaled dimension and must be verified on site before proceeding with any work. All discrepancies must be referred to the superintendent for a written decision prior to ordering, supply or installation. Urbis must be notified in writing of any discrepancies.

PROJECT DIRECTOR: MK


CLIENT
SCHOOL INFRASTRUCTURE
NSW

DRAWING TITLE
LANDSCAPE SITE PLAN

ISSUE
DEVELOPMENT APPLICATION
SCALE
1:500 @ A1
1:1000 @ A3
DRAWING NO.
L200

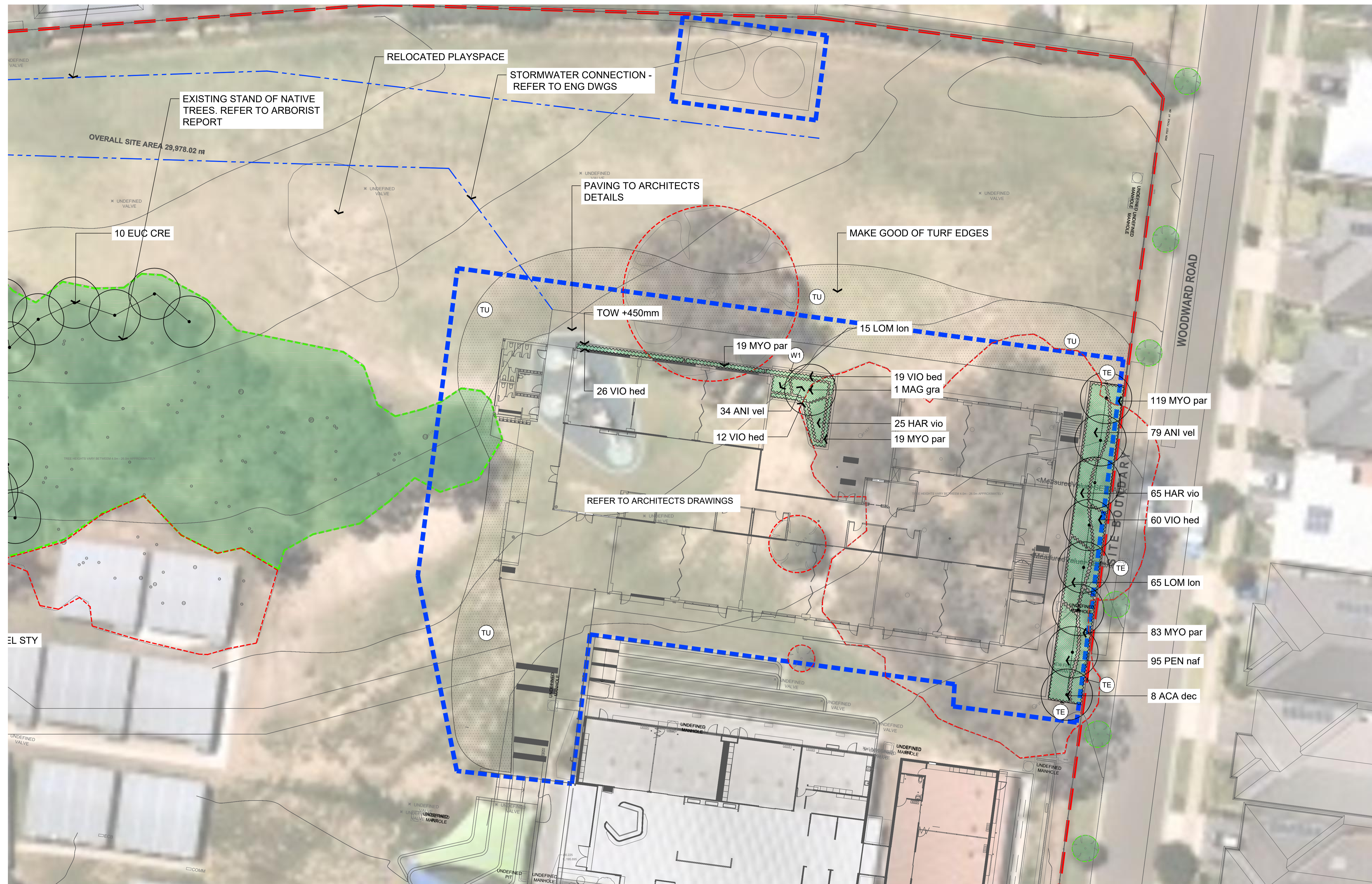
PROJECT NO.
P0019965

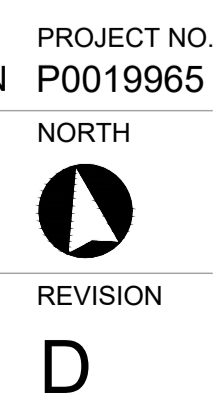
NORTH

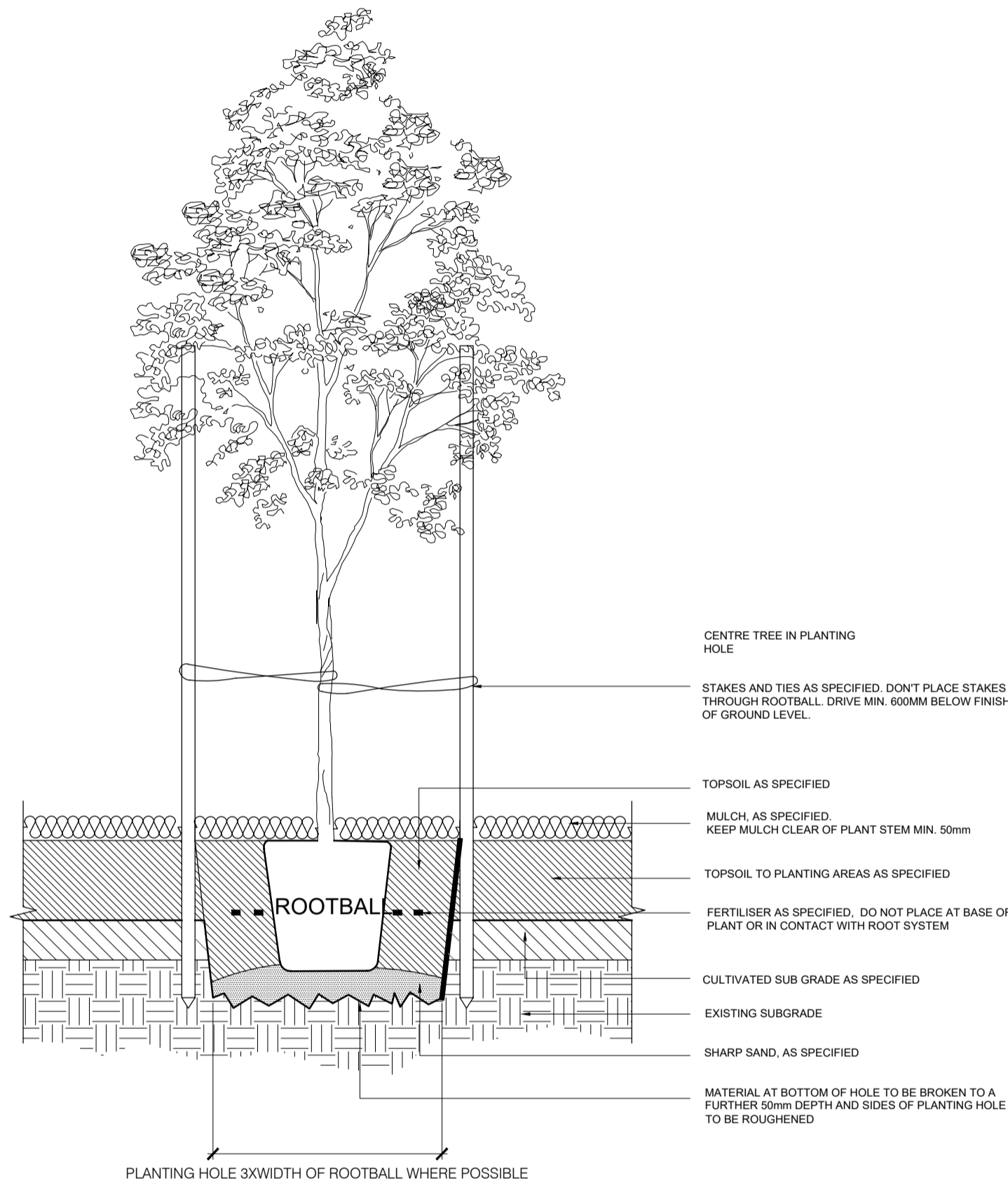


REVISION

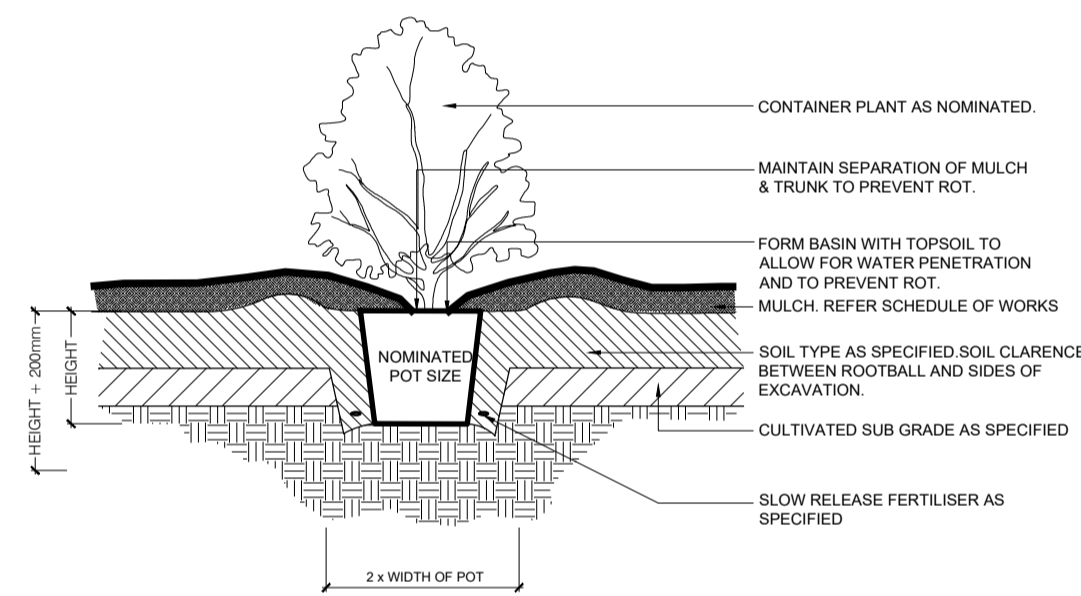
B



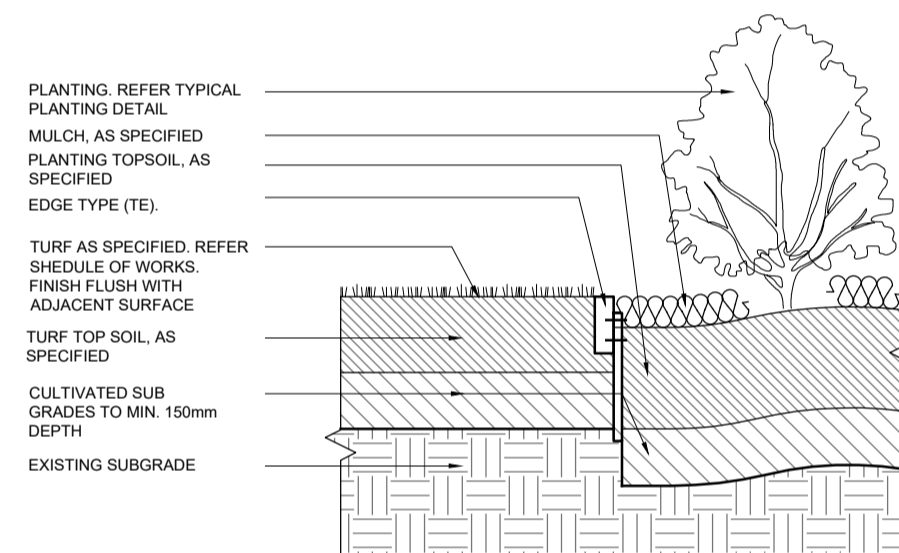




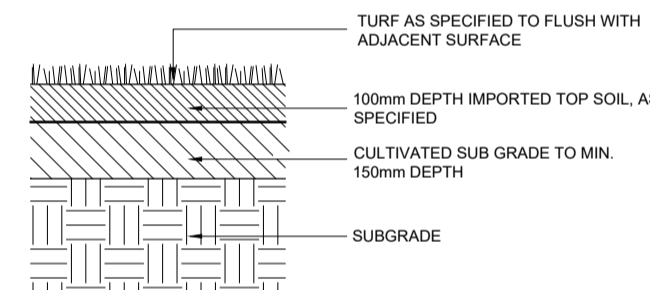
01 ON GRADE TREE PLANTING
901 SCALE 1:20 @ A1; 1:40 @ A3



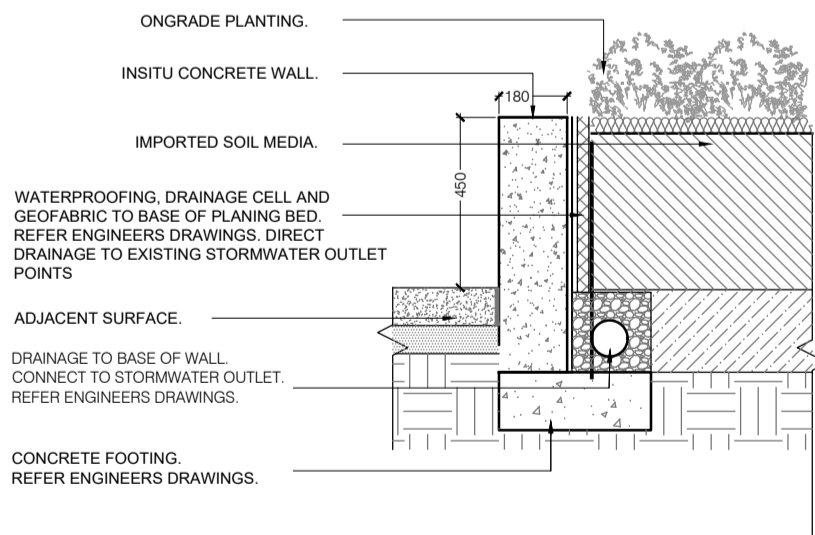
02 SHRUB PLANTING ON GRADE
901 SCALE 1:20 @ A1; 1:40 @ A3



03 TIMBER EDGE (TE)
901 SCALE 1:20 @ A1; 1:40 @ A3



04 TURF ON GRADE (TU)
901 SCALE 1:20 @ A1; 1:40 @ A3



05 WALL TYPE 1 DETAIL
901 SCALE 1:20 @ A1; 1:40 @ A3

REV	DESCRIPTION	DWN	CHK	DATE	PROJECT DIRECTOR: MK
C	DEVELOPMENT APPLICATION	GA	CR	08.03.2021	
B	DEVELOPMENT APPLICATION	GA	CR	10.12.2020	
A	DEVELOPMENT APPLICATION	GA	CR	01.12.2020	